

REGIONAL ATTRACTIONS

Terrace Bay ♦ Schreiber ♦ Rosspoint ♦ Jackfish



Aguasabon Falls in Terrace Bay



Schreiber Beach



Rosspoint Harbour



For more information, please visit or contact:

www.terracebay.ca/tourism

Email: tourism@terracebay.ca

Phone: 1-800-968-8616 (toll-free)

www.schreiber.ca

Email: cdo@schreiber.ca

Phone: 1-807-824-4638

www.rosspoint.ca

TABLE OF CONTENTS

REGIONAL MAP.....	2
STREET MAP OF ROSSPORT.....	2
STREET MAP OF TERRACE BAY	3
STREET MAP OF SCHREIBER.....	3
LOCAL TOURISM OPERATORS	4
AGUASABON GORGE AND FALLS	5
AGUASABON GOLF COURSE	5
BATTLE ISLAND LIGHTHOUSE	6
CASQUE ISLES HIKING TRAIL	6
DRAGFEST.....	7
GHOST TOWN OF JACKFISH.....	7
GUNILDA.....	8
LAST SPIKE AT NOSLO MONUMENT	8
MOUNT GWYNNE.....	9
NEYS PROVINCIAL PARK.....	9
RAINBOW FALLS PROVINCIAL PARK	10
ROSSPORT CABOOSE MUSEUM	11
SCHREIBER BEACH.....	11
SCHREIBER RAILWAY HERITAGE AND FESTIVAL SITE.....	11
SLATE ISLANDS	12
STEEL RIVER.....	12
TERRACE BAY BEACH	13
TERRY FOX BEACH.....	14
WHITESAND LAKE	14
WORTHINGTON BAY	14
REGIONAL EVENTS.....	15

Terrace Bay Dragfest



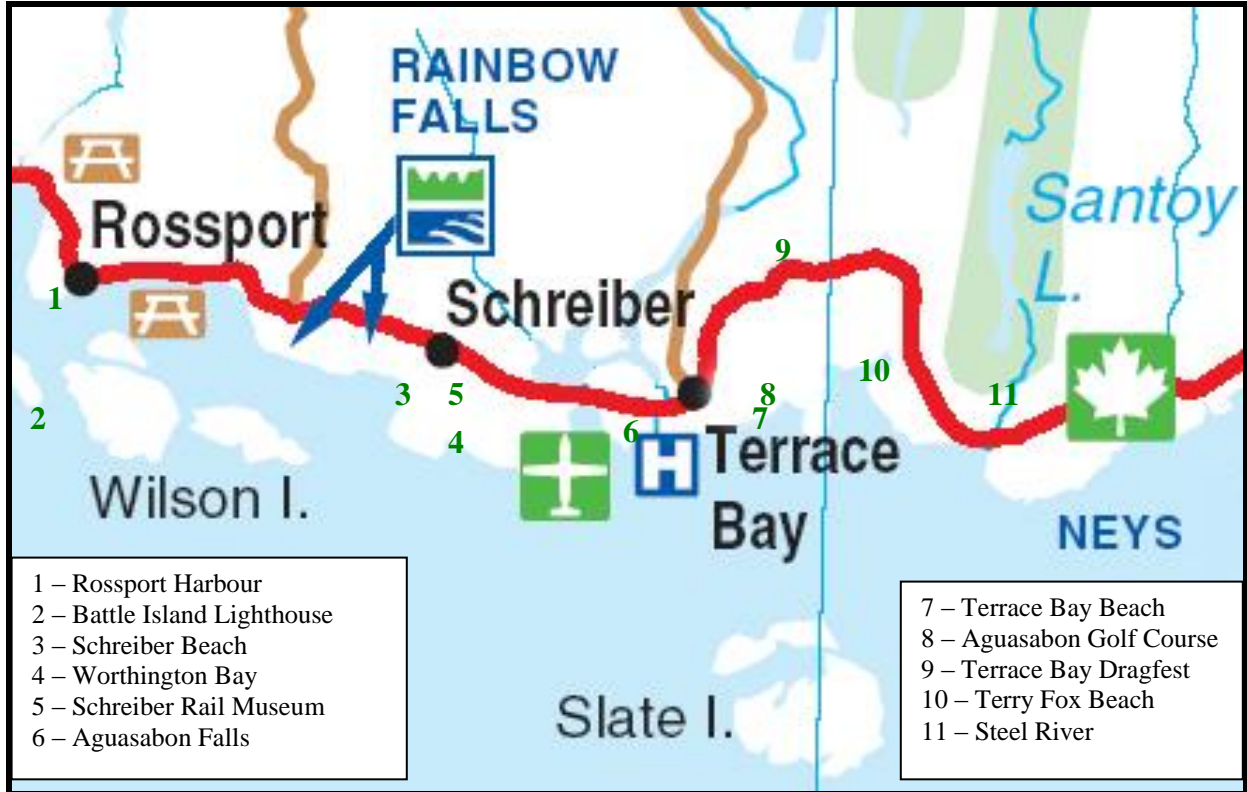
Casque Isles Hiking Trail



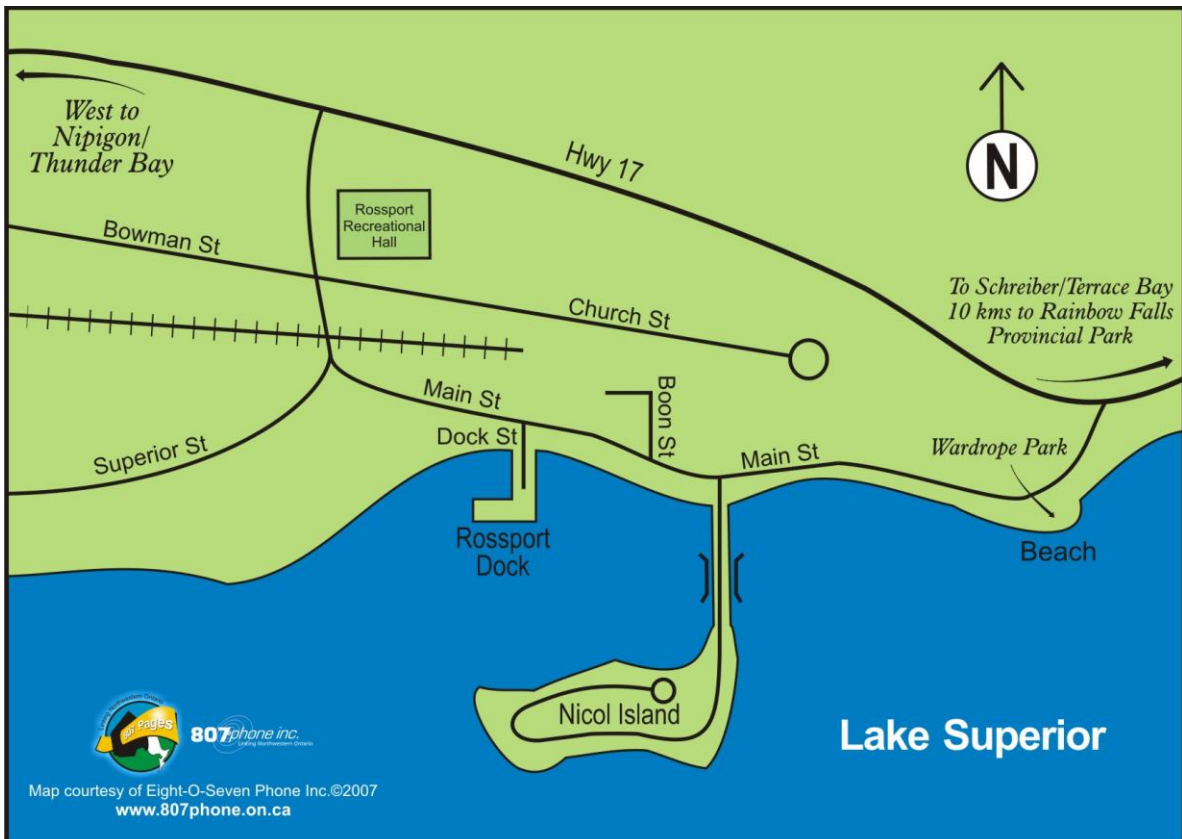
Caribou at the Slate Islands



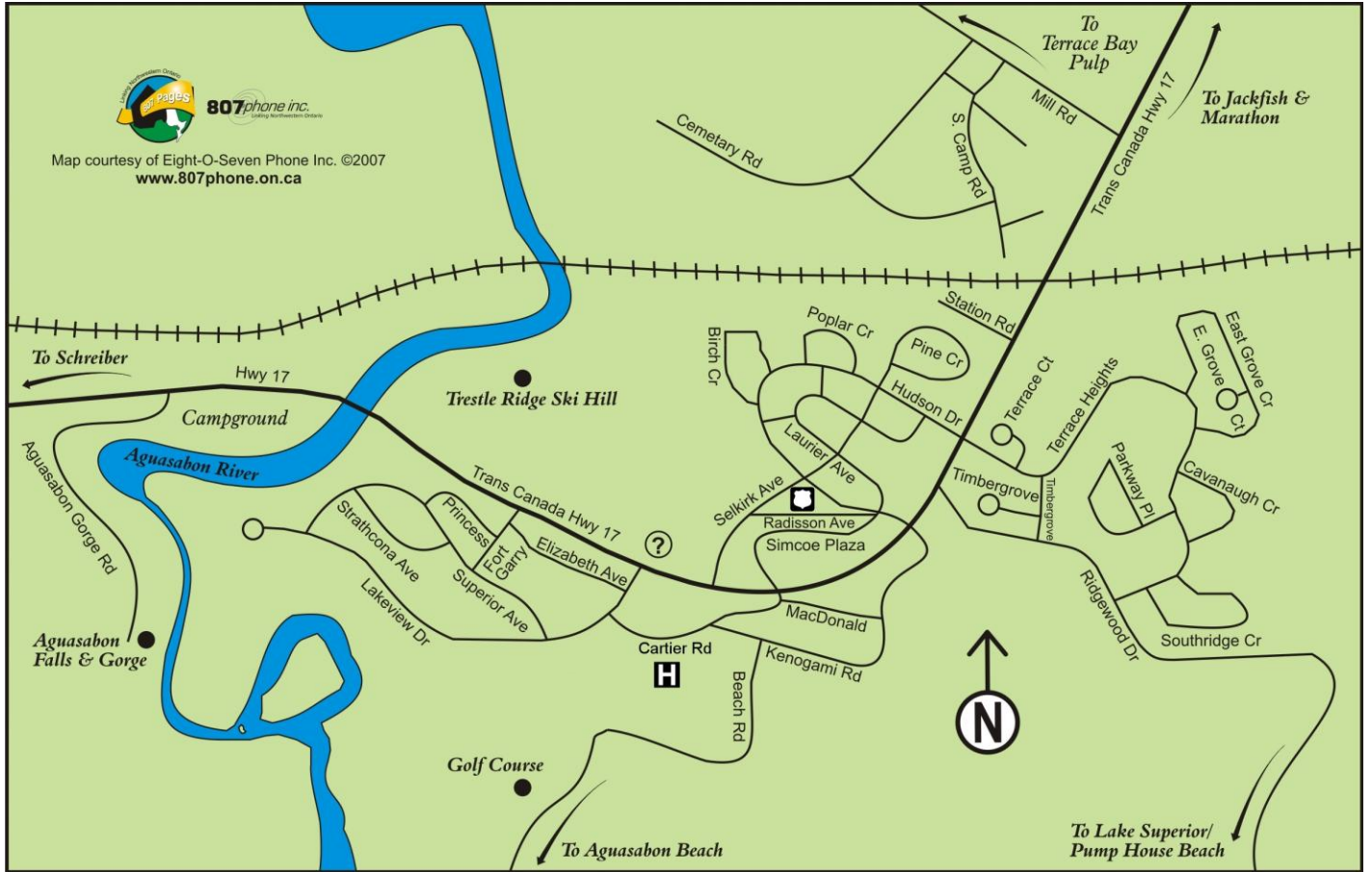
REGIONAL MAP



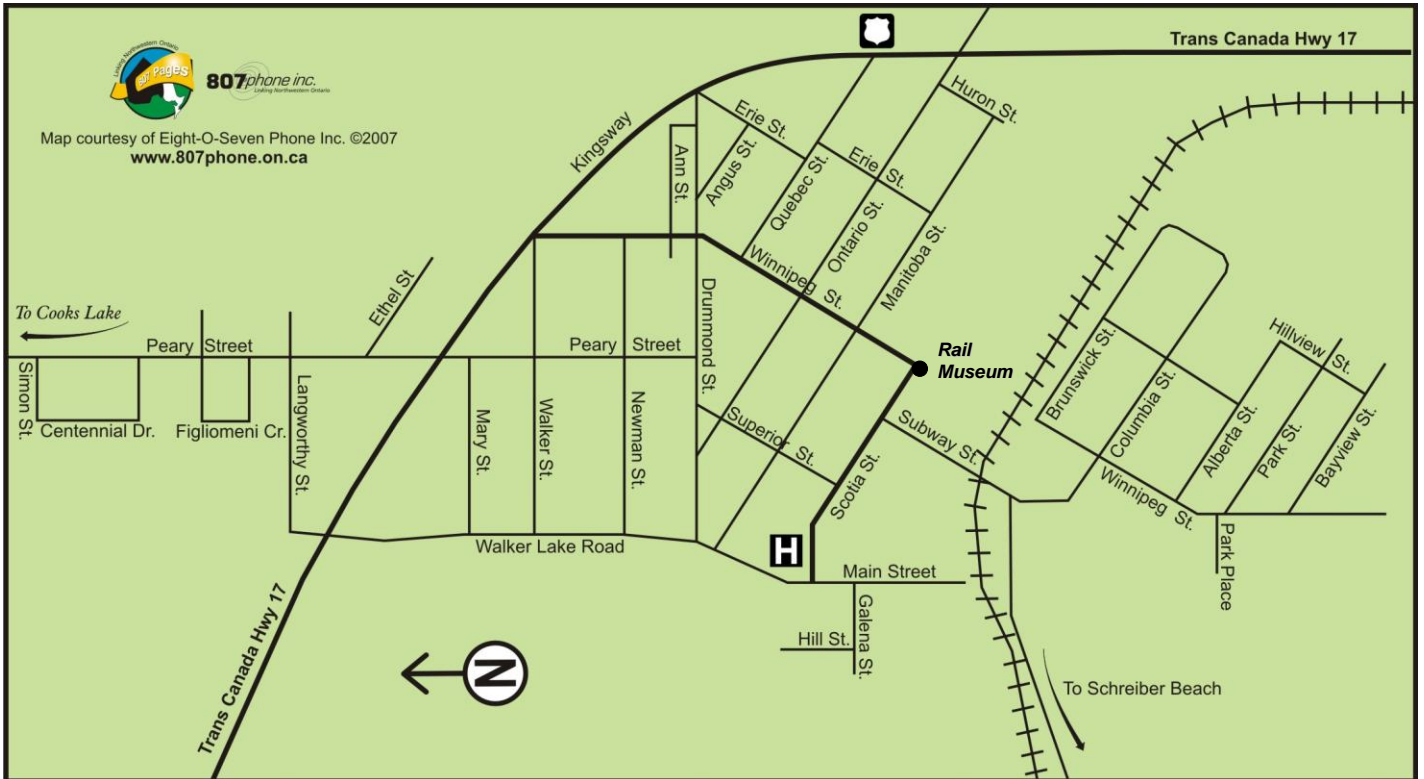
STREET MAP OF ROSSPORT



STREET MAP OF TERRACE BAY



STREET MAP OF SCHREIBER



LOCAL TOURISM OPERATORS

Bluebird Charter Boat – Linda & Come Oiseau, (807) 824-3353

www.bluebirdcharterboat.com, Email: info@bluebirdcharterboat.com



Bluebird Charters will help you fully appreciate the natural beauty that lies within Northwestern Ontario. Located off the shores of Lake Superior, Bluebird Charters provides full or half day fishing excursions, boat rides, and site seeing tours.

Visit our website for more information and pictures and feel free to contact us anytime.

Caribou Charters – Doug Caldwell, (807) 825-3719, www.cariboucharters.com

Doug has been taking out charters for years and services the Slate Islands with a mid-sized vessel that's able to carry up to 5 sea kayaks and paddlers.

Lake Superior can be rough and unpredictable, but you are in good hands with Caribou Charters. Call for price quotes and visit our website for some great videos of our encounters with caribou!



Superior Jane Charters, (807) 824-2073, Email: yennek@ontera.net



For those guests who want to experience the North Shore in all its natural glory, Colleen Kenney offers guided nature tours. Colleen, an experienced and licensed guide, offers a variety of activities. Fishing trips are available for \$50/hour with a maximum of three to four adults. Sightseeing, hiking, drop-off and pick-up to local historic pristine beaches can also be arranged. Shore lunches can be provided with advance notice. In the winter months, snowshoeing tours can be given, with the fee varying on length of the hike. Colleen also offers Battle Island Lighthouse tours and Rock hounding trips.

Superior Outfitters – Dave Tamblyn, (807) 824-3314

www.superioroutfitters.on.ca, Email: dtamblyn@nwconx.net



A complete range of paddling adventures awaits you on Lake Superior and its connecting rivers, no matter what your age or experience level. Whether you dream of the thrill of sea kayaking or drifting lazily along the shore in a canoe, Superior Outfitters has a course, certification program or trip package to fit you for a day, a weekend or longer. Bring lots of film, a sense of adventure and humor and the desire to take on breathtaking natural wonders of the Canadian Shield.

Superior Outfitters is owned and operated by Dave Tamblyn and Ruth Lepp. Members of the Eastern Canadian Sea Kayaking Outfitters, Ruth and Dave have been operating their business for 15 years. They offer a wide range of tours and instructional programs and recently opened a paddling shop in Rosspport. They, along with their small, carefully selected staff will provide you with a safe, rewarding and enjoyable paddling experience.

AGUASABON GORGE AND FALLS

The Aguasabon Gorge and Falls are located one km west of the Tourist Information Center in Terrace Bay. From Highway 17, follow the signs to a parking lot at the falls. From the parking lot there is a boardwalk out to a viewing platform overlooking the gorge and the spectacular 100 foot falls that are flowing into the gorge from the left. The river follows fractures in the bedrock that are approximately 2.6 billion years old, and the exposed rock located on the face of the Gorge is called “granodiorite.” Enjoy the rugged beauty of the North Shore.



The Aguasabon Gorge features a large turn-around parking lot, picnic tables and washrooms. The Gorge boardwalk is wheelchair accessible and serves as an entrance point to the 52 km Casque Isles Hiking Trail.



AGUASABON GOLF COURSE



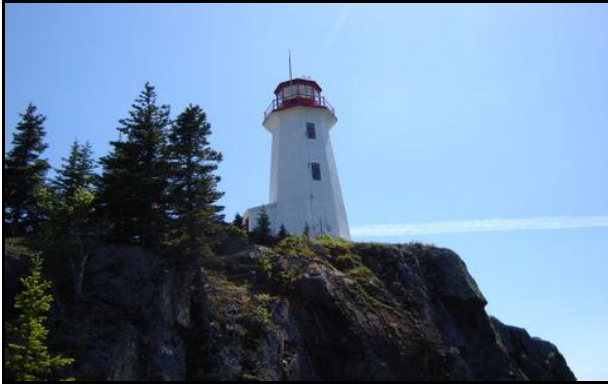
Tee off at your convenience on this challenging nine hole layout featuring striking scenery that borders the winding Aguasabon River and skirts the Terrace Bay beach. Tee off times are not required as there is usually no more than a 10-15 minute wait, however out of town visitors should call ahead to ensure a tournament or event is not scheduled.

Following a round of golf, you can relax in the clubhouse, which offers a full service restaurant, licensed bar, basic pro shop, and elevated patio deck with a view of the course and Lake Superior.



The course also features a driving range, putting green, powered gas cart rentals, golf club and pull cart rentals, and access to the Gold Association of Ontario (GAO) computerized Handicap system. Some of the things that make this course special include: affordable membership and green fees, quick playing times (9 holes less than 2 hours), incredible scenic views, and easy access to from local hotels.

BATTLE ISLAND LIGHTHOUSE



The Battle Island Lighthouse is located near Rossport. It was first established in 1877, although the present tower was built in 1911. It has a focal plane of 36 meters (118 feet) and has three white flashes separated by 4 seconds, every 24 seconds. It consists of a 13 meter (43 foot) round concrete tower with lantern and gallery and the building is painted red and white.



Interestingly, the Battle Island Lighthouse was among the last of the Great Lakes lighthouses to be automated. It is currently used as an active seasonal aid to navigation. The keeper's house is occupied by a resident caretaker who is the former keeper and he sometimes allows visitors to tour the light station.

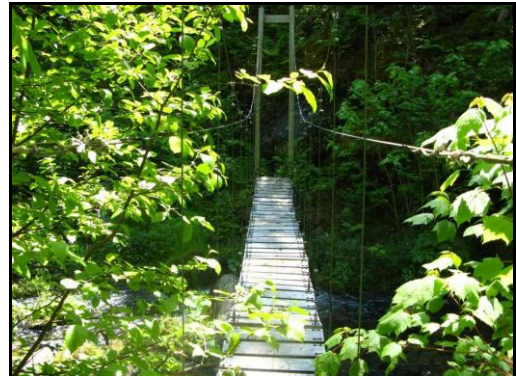
The lighthouse is accessible only by boat and tours are available.

CASQUE ISLES HIKING TRAIL

The Casque Isles Hiking Trail is a 52.4 km hiking trail that runs from Terrace Bay, through Schreiber and into Rossport. It is part of a larger trail network known as the Voyageur Trail. The Casque Isles trail is well signed, well groomed and offers many campsites to accommodate the numerous visitors who are attracted to the rugged beauty of Lake Superior.

The trail follows the shoreline of Lake Superior, hopping from bay to bay, and is divided into five units, each with its own unique wilderness experience and access point from Highway 17. These units vary in hiking time and difficulty so that both the advanced and amateur hikers can enjoy the scenery. The Casque Isles Hiking Club organizes guided hikes, trail blazing parties, and general meetings to discuss ideas and issues.

If you would like more information, contact the Terrace Bay Tourist Information Centre, or call Doug Stefurak at (807) 824-2724. Ask for a schedule of the hike dates for the summer.



DRAGFEST

The Terrace Bay Dragfest was started in 1998 by members of Superior Classics Car Club. These car enthusiasts wanted to bring a high quality, high access, low cost and professionally operated drag race to the area. Since the first event almost ten years ago, the Dragfest has become highly successful with over 300 participants taking part in the weekend-long event. Held each August at the Terrace Bay Airport, it features such vehicle categories as Street, Sportsman, Super Street, Pro, Super Pro, Cycles and Sleds and Junior Dragsters. There is something for everyone to enjoy! The Dragfest is a must-see event for anyone who craves speed and thrills.

Spectators come from all over Canada and the United States to watch the cars and the population of Terrace Bay has been known to exceed 10,000 during this weekend. In addition to the races, a car show and dance are also held. Visitors and residents are encouraged to come and experience the excitement of the largest motor sports event in Northwestern Ontario. For more information, phone Dan Riley, President of Superior Classics Car Club at (807) 824 – 2001.



GHOST TOWN OF JACKFISH

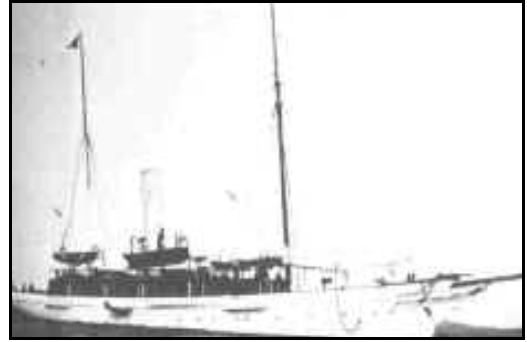


The ghost town of Jackfish is located off Highway 17, just 20 miles east of Terrace Bay. There are many weather-beaten houses and fallen foundations left from the once prosperous town. The trestle docks have long been gone, the C.P.R. churches and schools have all been dismantled and the famous hotel demolished. To get there, drive east from Terrace Bay and turn right onto a gravel road. There is a yellow sign on the back of a stop sign reading “Jackfish Siding.”

Follow this road straight to an open area parallel to railway tracks and follow the road along the end of an open area to the right. At the far edge of the open area, the road curves left towards the railway track. Park here. Walk along the tracks west to the old town of Jackfish. The walk should take 15 minutes.

GUNILDA

Although Lake Superior is home to many shipwrecks, the sinking of the Gunilda is the most famous example in our area. The Gunilda was a 195-foot steam yacht owned by oil baron William L. Harkness who was one of the world's wealthiest men at the time. In 1911, Harkness took some friends and family for a cruise up the Great Lakes with plans to fish for speckled trout in Lake Nipigon. En route, the vessel drew stares of admiration for her fine mahogany woodwork and gold scrollwork on her immaculate white hull.



Harkness put in at Jackfish Bay to inquire about renting a local guide to navigate the channel but balked at the fee. Sure that his crew of 20 could ease the steel-hulled yacht safely through the final leg of the journey to the fishing grounds, he ordered his captain to “carry on!” At his command, the majestic vessel steamed across the bay on the foggy morning of August 29 on what would be the Gunilda’s final journey.

On August 31, the Gunilda slammed into McGarvey Shoal, just 8 km from Rosspport and sank 265 feet near the community. Today, it sits upright facing Rosspport Harbour and is now protected by Heritage Shipwreck. Divers with the proper certification and training are rewarded with pristine views of a world class yacht. Guests can also visit the Gunilda gift shop in the community of Rosspport which sells souvenirs and provides information on the wreck.

LAST SPIKE AT NOSLO MONUMENT



The history of the railroad is intertwined with that of Terrace Bay and Schreiber and is perhaps no more evident than at Noslo, just west of Jackfish. After much debate, the bill to build a railway across Canada was signed on February 15, 1881. William C. Van Horne was hired as the General Manager. Some members of Parliament fought to have the Lake Superior section go through the American side; however, Van Horne convinced them to create an all-Canadian line.

The last spike driven between Montreal and Winnipeg was at Noslo on May 16, 1885. Colonel Oswald of the Montreal Light infantry hammered home the last spike. Oswald was on the troop train that was traveling home from an armed rebellion in Saskatchewan. A major factor in the completion of the Lake Superior section of the railway was due to the necessity of getting militia forces from the east to the Northwest Rebellion as quickly as possible.

On May 16, 1935, a few of the original workers and veterans of the C.P.R. re-enacted the drive of the last spike at Noslo. A stone and cement monument reads: Driving the Last Spike between Montreal & Winnipeg May 16th, 1885 was re-enacted here by veterans and some original participants May 16th, 1935. This monument was built on the spot to commemorate the historic occasion.

MOUNT GWYNNE



Mount Gwynne is located on the Schreiber Point Section of the Casque Isles Hiking Trail and is the highest point in the area. It sits 260 km above Lake Superior and boasts a spectacular 360° panoramic view of the forested hillsides and the vast expanse of the lake. The Schreiber Point Section has a trail time of 6.4 km and a section time of 12.2 km or 3 – 5 hours. Visitors can gain access to this section of the trail by following Worthington Bay Road or Winnipeg Street and Isbester Drive in Schreiber. The view from the summit of Mount Gwynne is well worth the hike!

NEYS PROVINCIAL PARK

Neys Provincial Park is located 50 km East of Terrace Bay, on Highway 17. It is a Natural Environment Class park and includes the historic Coldwell Peninsula as well as the surrounding island system. The ghost village of Coldwell, which lies just outside the eastern boundary of the park, was home to an old railway and fishing community until the 1960s. All that remains of the village now are a few foundations, shipwrecks in the harbour and a cemetery.



The history of Neys also includes the establishment of a Prisoner of War camp, in which hundreds of German inmates lived. These men were imprisoned from 1941 to 1946. At the end of the war, Neys became a processing camp for all POW detained in Northwestern Ontario and was then turned into a minimum security work camp for prisoners from the Thunder Bay area. The camp was dismantled in 1954. Visitors can view a model of the camp at the Visitor Centre.

The park features weathered and rounded gray or pink rock along the western side of the Coldwell Peninsula. In fact, Neys is home to one of the hardest and rarest mineral complexes in North America, the Coldwell Alkalic Complex, which formed over 1 billion years ago when magma chambers formed beneath the surface, causing surface swelling to occur. Eventually, the swelling turned into an active volcano! Today, the once hot magma chamber is exposed surface rock on the northern shore of Lake Superior. The park has an interpretive trail (Under the Volcano Trail) with detailed information plaques that explain the process with more detail.

The park has four campgrounds providing 144 campsites (61 with electricity). Toilets, water taps and firewood are available at each campground along with a centrally located comfort station equipped with showers and laundry facilities. Popular activities at Neys include hiking, boating, fishing, swimming, canoeing/kayaking & wildlife viewing. There is much to see and do at Neys Provincial Park. For more information, phone (807) 229-1624.



RAINBOW FALLS PROVINCIAL PARK

Rainbow Falls Provincial Park is located on Highway 17, 26 kilometers west of Terrace Bay. Visitors have two sites to choose from; Rainbow Falls, which is located on Whitesand Lake, and Rosspport campground. The former includes 113 tent and trailer sites, 28 of which have electrical hookup, while Rosspport has an additional 40 sites, with 16 including electricity. The park is named for the rainbows that often rise from the glittering cascades that fall down the rocky steps from Whitesand Lake to the Whitesand River, which also lie within the park's boundaries.

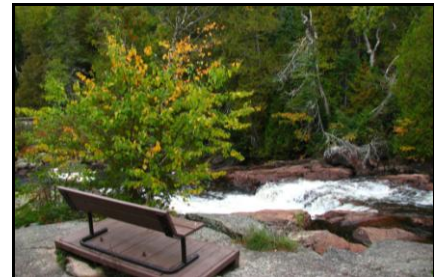


Rainbow Falls is a surprise. The falls don't begin and end all at once, but rather the erratic jointing of the bedrock has caused the river to run over a number of ledges and drop in a series of cascades rather than one large fall. Furthermore, the falls look pink, as the water drops over the reddest of granites. Masses of lichen turn the same pink bedrock gray.

Wildlife found within the park includes hares, chipmunks and squirrels, as well as the occasional appearance of deer, moose and black bear. Grouse and great blue herons also make their home in the park. Visitors are encouraged to try to identify the flora and fauna of the area.

For the adventurous visitor, there are three trails to explore within the park, as well as a segment of the larger Voyageur Hiking Trail. The Rainbow Falls Trail is a self-guiding 11/2 mile trail which follows the Whitesand River before crossing the falls. Further on, there are signs for the Casque Isles section of the Voyageur Hiking Trail., which winds along the shores of Superior, from Terrace Bay to Rosspport. The second trail is the Back 40 Trail, which is rated as the most challenging of the park's trails. It is an 11/2 mile climb that reveals grand vistas of the two lakes and surrounding country. Finally, the Superior Trail begins with a series of high, rocky steps that terminate on a flat slab of Canadian Shield. Here are terrific views of Lake Superior and the surrounding hills. The trail winds over this rocky stretch before funneling into a spruce forest.

Canoeing is another popular activity at the park. Whitesand Lake has sand beaches for swimming as well as a boat launch. Visitors can rent canoes and paddle boats from the park for a day of paddling or pedaling. Whitesand is home to good populations of smallmouth bass, while the Whitesand River is the place for rainbow and speckled trout in spring and steelhead during the fall run.



Rainbow Falls Provincial Park runs a small Natural Heritage Education program with a small visitor centre on the beach as well as an interpretive program being offered during the summer months. The park's gates are shut during the winter, but skiers can tackle the campground roads that double as cross-country trails. For more information, phone (807) 824 – 2298.

ROSSPORT CABOOSE MUSEUM

Railway enthusiasts and people of all ages will enjoy the Caboose Museum located on Main Street in downtown Rosspport. The museum is housed in a re-furbished rail car and features artifacts and photos showing the history of the community, with particular emphasis on commercial fishing and the C.P.R. The museum is open July and August from 11 a.m. to 6 p.m. daily except Mondays and Tuesdays. For more information, contact Cathy Gerow-MacEwen at (807) 824-3321.

SCHREIBER BEACH

Schreiber Beach is a must see for tourists who prefer a more relaxing pace. Lake Superior's sandy beaches provide the perfect opportunity for swimming, picnicking or hiking. Stop for a rest in Schreiber's beautiful gazebo. To find this secretive beach, ask a local or proceed to the downtown area, pass through the CPR underpass and turn right immediately following the underpass.



For those visitors interested in geology, what is possibly North America's most diverse, best preserved and internationally known collection of micro-fossils within Precambrian rock is found in the Schreiber Channel. This nature reserve is located just southwest of Schreiber. As one hikes along the shore of Lake Superior, one comes across a group of unusual concentric rings embedded in the rock. The rings vary in colour and size, with the largest more than three feet in diameter. They are clearly visible over a couple hundred square yards of bedrock that slopes down to the lake. It is not readily apparent what caused these intriguing circles, or stromatolites, in the rock. Schreiber Beach also provides access to Mount Gwynne through a rugged 2-4 hour hike that provides those successful with a breath-taking 360° view of the area.

SCHREIBER RAILWAY HERITAGE AND FESTIVAL SITE



Schreiber is home to the Railway Heritage and Festival site that highlights the town's background as the oldest railway community on the North Shore of Lake Superior. It builds on the history and culture both of Schreiber and the Canadian Pacific Railway. Schreiber was first founded in the 1880s as a railway construction camp. Initially called Isbester's Landing, the town later was renamed after a railway engineer, Sir Collingwood Schreiber, and it became a booming terminal for C.P.R.

Subsequently, the area became home to hundreds of immigrants from Southern Italy, whose descendants remain there today. It is a must see for all railway enthusiasts and other visitors who are interested in the past. The museum is seasonal and is open in the summer months.

SLATE ISLANDS



The Slate Islands Lighthouse is the tallest on Lake Superior standing 224 feet above sea level

The Slate Islands is one of the jewels of the North Shore of Lake Superior! It is a provincial park that is made up of two main islands, five minor islands and numerous islets located 11 km across Lake Superior from the Terrace Bay docks. The islands cover 36 square kms and are accessible by boat or plane, usually from Terrace Bay or Rossport. The two largest islands, Patterson and Mortimer, surround protected waters, coves, bays and smaller islands. The islands are populated by a variety of species, most notably, the concentrated presence of woodland caribou, whose ancestors crossed from the mainland on winter ice in 1907. According to the Ontario Ministry of Natural Resources, it is the largest known unpredated herd of this species. Other mammals found on the islands include beaver, muskrat, snowshoe hare, short-tailed weasel, red-backed vole, and red fox.



The islands are believed to have formed over a billion years ago when a huge asteroid smashed into the earth. They are not made of slate, but mainly of metamorphosed, igneous rock and rise to nearly 400 feet, 122 m above lake level. The meteor strike has left the Slates with a 10 m long shattercone, which is believed to be the largest in the world. Additionally, the glacial effects and pounding waves of Lake Superior have made the area rich in valuable and accessible minerals.

A lighthouse was built on Patterson Island in 1903, to help ships locate the harbour at the nearby town of Jackfish, Ontario. In 1985, the Slate Islands were protected as an Ontario provincial park. There are no facilities and the islands' remoteness is enforced by almost 9 km of water and its distance from any large communities. It is frequented by naturalists, fishing parties, sailors exploring the Great Lake, and recently by an increasing number of sea kayaking parties. Charters and tours to the islands are available.

To visit the Slate Islands, contact one of the local tourist operators on page 4 of this document.

STEEL RIVER

The Steel River is located twenty-four kms east of Terrace Bay, off Highway 17, above Lake Superior's north shore. This river area consists of long, narrow lakes, rugged cliffs, ravines, swamps, ponds, oxbow lakes and a 20-meter waterfall. The waterway is home to a variety of Northern Ontario plant and animal communities, including the Great blue herons, which nest on the islands of Cairngorm Lake. The Steel is one of the finest freestone steelhead rivers on the north shore. It has good flow throughout the year, with an average width of more than 50 feet.



One of the few north shore rivers never used for log drives, the Steel has deep pools and long riffles and rapids. An old road on the east side and heading south provides access to Henry's Pool and to the mouth entering Santoy Bay. On the west shore, a hiking trail leads north as the river transcends steep canyons and rugged bedrock terrain. Deep pools on the bends can hold steelhead all year. The Steel has more than 5.2 miles of steelhead water and is often fishable well into December.

To experience the Steel River, contact a local tourist operator on page 4 of this document or contact the Terrace Bay tourist information centre at 1-800-968-8616 or tourism@terracebay.ca.

TERRACE BAY BEACH



This huge sandy beach on Lake Superior offers delight to everyone, whether you like walking the beach, having a picnic, or taking a dip in Lake Superior's invigorating waters, there is something there for everyone.

If you want to get out onto Lake Superior, the beach has a boat launch for your convenience. The docking facilities can accommodate boats with a draft of three feet or less, and there is a ramp for launching boats up to 22 feet in length.

TERRY FOX BEACH

Terry Fox Beach is located in Jackfish, just a 15 minute drive east of Terrace Bay. In 1980, while on his Marathon of Hope, Terry tested the waters of Jackfish Lake with his artificial leg and was photographed splashing around with Greg Scott, another young boy with cancer. Terry spent the night here before resuming his journey, and the beach was named after him to honour that poignant moment. The long sandy beach located off the highway is perfect for swimming or lazing around and is easily accessible.



WHITESAND LAKE



Whitesand Lake, located just ten minutes west of Schreiber along Highway 17, provides a pleasant swimming and picnic area. It boasts a sandy, well-maintained beach, picnic tables and play area. A swimming raft is anchored just off shore during the summer months. A boat launch is located a short distance further down the beach so there is easy access to good fishing for small mouth bass, lake trout and perch.

Some local residents make Whitesand their year-round home. Others take advantage of this ideal natural setting for canoeing, waterskiing, sea-dooing, paddle boating, or just about any family water activity.

WORTHINGTON BAY

Worthington Bay, an example of rugged Lake Superior shoreline at its finest, is accessible from Worthington Bay road (not regularly maintained) off Highway 17, by hiking the Casque Isles Trail from Schreiber Beach, or by boat.



The bay features one of the few historic pictograph sites on Lake Superior. They are the signatures of native hunters who passed through our area hundreds of years ago.

Also in the area is Mt. Gwynne, which is the highest point in the area. There are also remnants of the once productive North Shore gold mine. Derelict machinery, building foundations and old rails evoke images of long past mining activities. Sightings of bald eagles and other wildlife will enhance your Superior North experience, so pack a picnic, hike the trail and enjoy a day at beautiful Worthington Bay



REGIONAL EVENTS

February

The “Peel Off Winter” Celebrations in Schreiber are held every February and are perfect for winter enthusiasts of all ages! Sledding and other sporting events are held. If you are hoping to beat the winter blues, then this is the event for you



April

The Green Tradeshow is held the last weekend in April and features environmentally friendly products and services from regional businesses and groups.

June

The Marathon Music Festival occurs in June and features entertaining events and activities all weekend long. It is a great weekend getaway for the entire family.

The Rosspoint Island Sea Kayak Symposium is scheduled for the 3rd week in June and involves kayaking events and instruction for all levels from beginner to expert.

July



Canada Day celebrations in Terrace Bay are always popular with both residents and visitors. Highlights include fireworks, a beach party and a Canada Day ceremony. Don't miss all the family-friendly festivities that are held in the recreation complex!

Schreiber Heritage Days occurs every 3rd week in July, and the whole town comes out to celebrate its unique history. Events include town-wide yard sales, bocci tournaments, ball games, theme dinners, and a spectacular parade.

The Pays Plat Annual Pow Wow is held each July and is one of the main social gatherings on the reserve. Pays Plat is just 25 km west of Schreiber, and visitors will be treated to a fascinating experience. Events to see include booths, displays, drumming and dancing.

August

The Terrace Bay Annual Drag Fest is the biggest motor sports event in Northwestern Ontario and is held every August at the local airport. Participants come from all over Canada and the United States to showcase their vehicles.

The Township of Terrace Bay swells to over 10,000 people with this event and visitors should definitely book their rooms in advance.



August Continued ...

Red Rock's "Live from the Rock" Folk Festival is a three-day music and art festival with on-site camping, five stages, a family area and an artisan's village. Held in August, it is a celebration of community and the arts on the northern shore of Lake Superior.



Wadgefest is an explosion of activities in Manitouwadge during August and fun for everyone.

The Annual Neys Nostalgia Days are held each August in Neys Provincial Park, just west of Marathon. Past events have included a spirit campfire, games, a voyageur snack, a scavenger hunt and more! This is a fun-filled weekend that everyone will enjoy.

The Nipigon Blueberry Blast Festival is held during the long weekend in August and features various family events such as a parade, pancake breakfast, live entertainment, teddy bear picnic and of course, lots of blueberries.

September

The annual Terrace Bay Fall Fair occurs in September and features numerous exhibitions including crafts, baking and artwork. There is something for everyone.

The Nipigon Fall Fishing Derby is not to be missed by fishing enthusiasts! It is held in September, and is the largest held derby on the North Shore. There is lots of fun and activities occurring all week long as well as prizes to be won.

November

The Schreiber Medieval Festival is an evening filled with great food, exciting events and all-around good fun! Come out and see fantastic costumes, medieval dancing and classical guitar instrumentals as well as children and adult games and crafts. This event occurs in November at the Schreiber Recreation Centre and proceeds go to the North Shore Harvest Food Bank



December

The Terrace Bay Old Fashioned Skating Party is now in its fourteenth year and is held at the local arena. This year, it is scheduled for Thursday December 6th from 6:30 p.m. to 8 p.m. Come out and enjoy an evening of old-time fun.

More Information

For more information on Terrace Bay, Schreiber, and Rosspoint events, please visit the regional community calendar at www.terracebay.ca/events or the other Municipal websites at:

- www.nipigon.net
- www.marathon.ca
- www.redrocktownship.com
- www.manitouwadge.ca